



TRANSPORT  
PORTFOLIO

**SGP**

Architects + Masterplanners





# CONTENTS

---

## INTRODUCTION 4

Thought Leadership 6

---

## TRANSPORT EXPERIENCE 8

Nexus Training Facility South Sheilds 10

Broadmarsh Bus Station, MSCP, Library and Retail Nottingham 12

Halifax Bus Station 14

Stevenage Bus Interchange 16

Halifax Station Gateway 18

Huddersfield Gateway Bus Station 20

Huddersfield Bus Station Canopy 22

Dewsbury Bus Station 24

Heckmondwike Bus Station 26

---

## FURTHER INFORMATION KEY CONTACTS + OUR PORTFOLIOS 40

Frameworks 42

Key Contacts 43

Our Portfolios 45

Our Sectors 46

Selby Station 28

Blethcley Rail Depot Milton Keynes 30

Derby Bus Station 32

Dudley Very Light Railway NIC 33

West Yorkshire Combined Authority – Transforming Travel Centres 35

Prologis RFI DIRFT II + III Daventry 36

Bournemouth Aviation 37

Norwich Airport Hangar and Workshop 38

**SGP**

Architects + Masterplanners



## INTRODUCTION

The transport team at Stephen George + Partners can claim over 25 years' experience in the transportation sector, developing a project portfolio worth over £250 million over the last 7 years. SGP has capabilities across all aspects of the transportation sector, from state-of-the-art railway stations, rail depots and training centres to new build bus stations, bus depots, interchanges and MSCP's that link modes of transport and improve services across the area, and vital transport-based master planning projects to kick-start local and regional regeneration schemes. SGP are actively delivering schemes for Local Authorities and Transport Authorities from inception and strategic briefing, through Strategic Outline Business Case Approval, Detailed Design and Technical Delivery to Full Business Case Approval, Construction on site and handover.

Hands-on and working closely with clients to understand their goals, SGP offers support throughout the process, adding value and challenging the situation to deliver the best creative, practical solution for each individual scheme. Be it road, rail or aviation, our extensive experience gives our clients confidence.

Transportation is a complex sector and SGP has the experience and technical expertise to work with the wide range of bodies involved, be they service provider, infrastructure supplier, local authorities, stakeholder and end user organisations or statutory bodies. Whatever the client's level of experience in the transport sector, SGP's knowledge of the processes, approvals and technical requirements of key authorities like Network Rail eases the project from inception to completion.

With a diverse range of skills and experience, SGP can offer services beyond just design and build, from finding sites and site assessments to supporting funding bids and stakeholder consultations, making accessibility and H&S audits and post-completion management, maintenance strategies and Technical Advisor roles.

Transportation projects take the form from their function, but SGP's design know-how creates operationally practical structures without compromising the design aesthetic. Creating impressive and welcoming buildings, be they new build or renovating heritage assets of huge local importance, our designs marry sensitivity with practicality to create uplifting architecture and safe places where people are happy to be, to wait, to meet and part.

Sustainability impacts many facets of the transport sector. At SGP we believe high quality facilities in a landmark or simply beautiful building, can promote a modal shift from private transport to public services, reducing congestion and pollution. The building itself can say as much for sustainability as the change in a user's mode of transport, and SGP puts sustainable, locally-sourced materials and technologies at the heart of the design, with renewable energy and energy saving measures built-in. Our designs also embrace the impact of technological improvements, such as electric bus fleets, improved battery technology and the development of hydrogen cells.







## THOUGHT LEADERSHIP

Too long depressing wastelands of concrete, grit and litter, transport hubs seem to embody the sins of the poor architecture and heartless practicality of the 1950s and 1960s. Yet with the increasing demand for interconnected, green, public transport, bus, coach and rail stations and interchanges are taking their place as unlikely heroes in the renaissance of the town centre.

Railway journeys have always been seen as romantic and modern, ably supported by the great cathedrals of rail travel: Brunel's soaring ironwork at Paddington, or the magnificent new shed for the Eurostar at St Pancras. Bus and coach travel have been the poor relation, relegated to the fume-laden periphery of inner ring roads or hidden away under monolithic multi-storey car parks. But this is changing. SGP's dedicated transportation team has been working with forward-thinking transport authorities and local councils to re-imagine these key transport hubs, embedding public transportation at the heart of regeneration and masterplans for town and city centres across the country.

Re-imagining transport infrastructure is one of the best catalysts for regeneration, providing a powerful "force multiplier" effect on the local community. Investing in the renewal of a down-at-heel bus or train station can – and has – been the prime driver of regeneration, improving employment opportunities and economic development, and decreasing anti-social behaviour and petty vandalism. Across the country, projects such as Exeter St Sidwell's Point, Nottingham Broadmarsh and Rochdale Interchange are using transport hubs as the focus around which residential, office, retail and leisure activities can be centred, revitalizing an area's day and night-time economy.

Focusing on the need to encourage wider use of public transport through the enhancement of facilities and vehicles, SGP promotes a dynamic approach to transport facilities typology. Seen as 'Gateways to towns and cities', the quality and first impression of the building is a priority.

We believe good architecture will ensure transport hubs provide a positive contribution to the built environment, creating spaces that enrich people's lives. By designing a place that people want to visit – rather than having to – we can create positive spaces for people to meet, and places that are hubs for businesses or cultural activity – not just somewhere to pass through as quickly as possible.

Yet connectivity – the links between the station and its surroundings – is also important. Sensitive urban planning should make the journey seamless, avoiding the station becoming a "dead end" by creating safe pathways between it and the travellers' retail, leisure, or work destinations, or indeed onwards via other means of transport to other destinations outside the town centre.

Transportation hubs are seldom considered to be the pacesetter for sustainability, but we believe innovative thinking has its place in the transportation sector. The green credentials of a modern transport hub should reinforce the message of promoting public transport as a more sustainable mode than the car and support the move by operators to a greener fleet.

SGP is working closely with local councils, transport authorities, passenger groups and other stakeholders to realise the value of providing a high-quality transport environment. By re-imagining stations and interchanges, public transport becomes not only a much more attractive experience, but an unlikely hero of the town centre, encouraging more passengers to linger, more travellers to arrive, and more homes and businesses to cluster around these hubs of urban renewal.





TRANSPORT  
EXPERIENCE







## NEXUS TRAINING FACILITY SOUTH SHEILDS



### PROJECT OVERVIEW

**CLIENT** Nexus

**FORM OF CONTRACT** Design & Build

**SIZE** 3,310m<sup>2</sup> (33,500ft<sup>2</sup>)

**VALUE** £8.4 million

**YEAR OF COMPLETION** 2020

- State-of-the-art facility, providing training for more than 1,000 people working on the Metro rail system, including contractors involved in the £350m modernisation of the urban rail system used by 40 million passengers a year.
- Located on the rail sidings to the north of South Shields Metro station, the new facility incorporates an 80m long double-height clear-span space for the train maintenance with inspection pits, mock station with platform, turnstiles and ticket area to allow for practical customer care and safety training and associated engineering ancillary facilities.
- The single building allows the development to be unified, with the two-storey training centre wrapping around the light maintenance area, balancing the need for “clean” accommodation with practical, hands-on engineering facilities.







## BROADMARSH BUS STATION, MSCP, LIBRARY AND RETAIL NOTTINGHAM



### PROJECT OVERVIEW

**CLIENT** Galliford Try Building

**VALUE** £43 million

**YEAR OF COMPLETION** 2021

**AWARDS** 2022 Constructing Excellence – winner collaborative working award, 2022 Brick Awards – Winner for commercial Development, Sustainable Development and overall awards winner. 2022 UK Parking Awards – Winner of Best new Car Park

- SGP was commissioned to support Galliford Try deliver the proposed new bus station, nearly 1300 space MSCP, library and retail facility within Nottingham City Centre.
- A key regeneration project for the City Council, this project is a complex, large mixed used development over eight levels.
- The external palette of materials has a very high specification quality – unusually for a MSCP, the client wanted the building to have a more civic presence which conceals the use inside the building. Construction commenced June 2019 with completion anticipated May 2021.
- The new facility replaces the existing bus station and MSCP on the same site which was at the end of its life.





# HALIFAX BUS STATION



## PROJECT OVERVIEW

**CLIENT** AECOM

**FORM OF CONTRACT** Design & Build

**VALUE** £20.7 million

**COMPLETION** 2024

**LISTING** Grade II Listed Building

**AWARDS** 2023 CIHT Environmental Sustainability Award – Winner, 2022 UKREIIF Awards – Infrastructure project of the Year - Shortlist

- SGP were commissioned to redevelop the existing bus station as part of a wider town centre redevelopment scheme.
- The scheme includes a number of unique opportunities with three listed building structures on site which need to be sensitively integrated into the final proposals. There are also significant level changes on site which requires detailed coordination with Aecom's Engineering and Transport teams. Alistair Branch (SGP's project Partner) delivered the last new bus station for WYCA at Castleford.
- Phase 3 of the development was completed Autumn 2023 with the new bus concourse becoming operational and half of the bus stands. Phase 4 and the remain stands are due to complete Spring 2024.





## STEVENAGE BUS INTERCHANGE

### PROJECT OVERVIEW

**CLIENT** Stevenage Borough Council

**FORM OF CONTRACT** New Build

**SIZE** 1,843m<sup>2</sup> (19,837ft<sup>2</sup>)

**VALUE** £8 million

**YEAR OF COMPLETION** 2021

**AWARDS** Constructing Excellence – Regional Awards Project of the Year – Winner

- Development of a new Bus Interchange for Stevenage town Centre.
- The client's objective is to facilitate the release of the existing bus station site, a key site which then facilitates the commencement of a major town centre redevelopment scheme SG1.
- The proposed interchange will provide a step change in passenger facilities as well as improving operation use, accessibility and safety.









## HALIFAX STATION GATEWAY



### PROJECT OVERVIEW

**CLIENT** Calderdale Metropolitan Borough Council

**VALUE** £40 million

Design Development and Business Case Support

**STATUS** end of RIBA Stage 3 Design

- SGP were commissioned with Mott MacDonald to develop the current RIBA Stage 2 design for Halifax Station Gateway towards an updated Outline Business Case Submission and detailed planning consent.
- The Scheme will provide significant improvements to the station role as a strategic gateway to the town centre. Enhancements to vehicular and pedestrian access, facilities and connectivity with the Nestle Site to the east of the station and rail viaduct are also key objectives.
- The enhancements to Halifax Station and its environs are part of a wider strategy to improve local infrastructure, boost jobs and economic growth and create a unified masterplan with adjacent stakeholders.





# HUDDERSFIELD GATEWAY BUS STATION

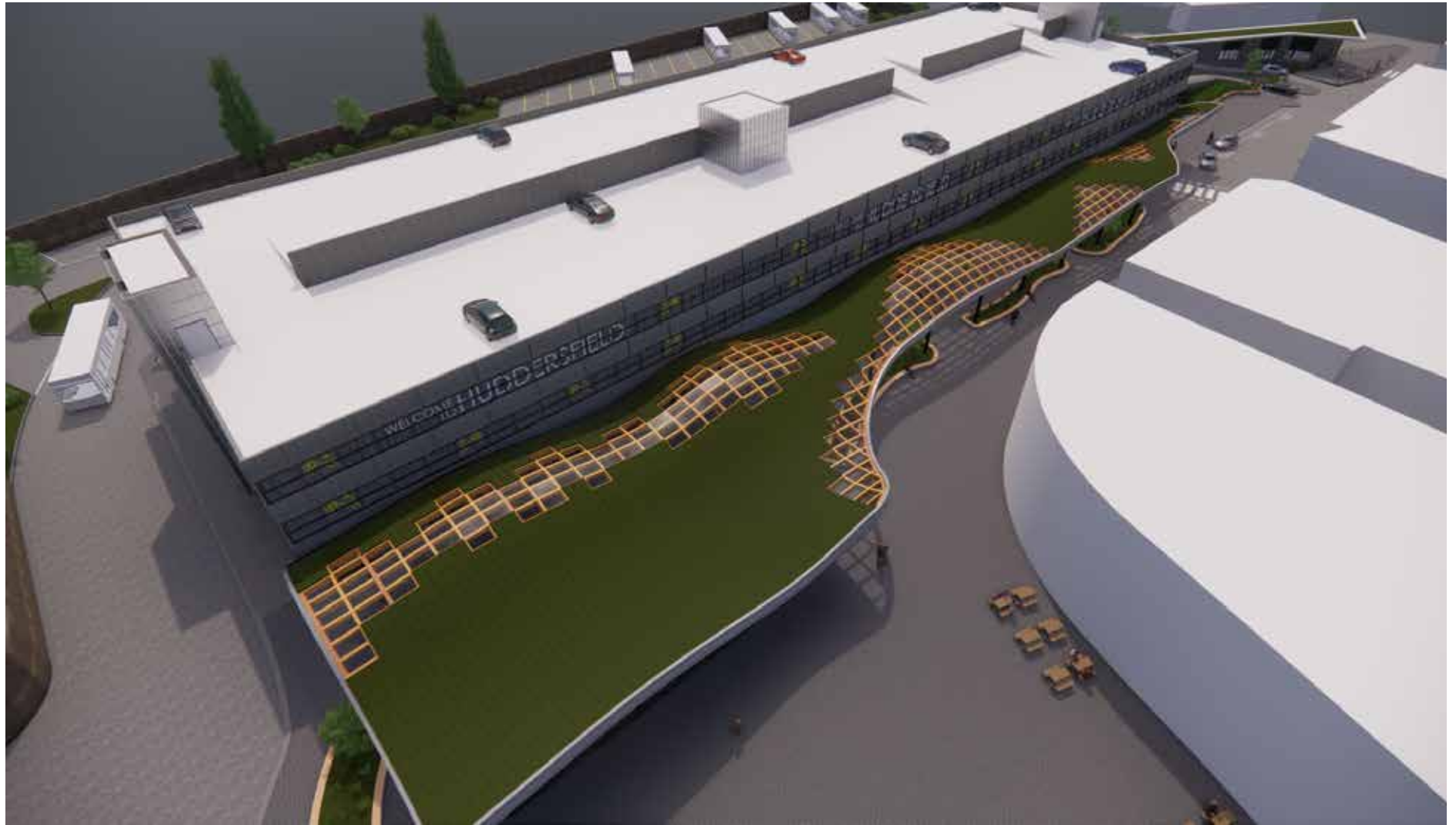
## PROJECT OVERVIEW

**CLIENT** Kirklees Council

**COMMISSION SCOPE** Concept Proposals

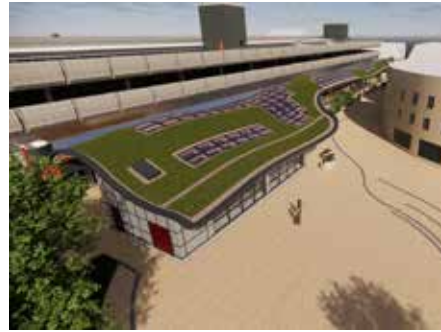
- SGP supported Kirklees Council to develop a strategic vision for the redevelopment of Huddersfield Bus Station as part of a wider £250m town centre masterplan.
- The Huddersfield Blueprint – a ten-year vision to create a thriving, modern-day town centre aims to deliver five key objectives for Huddersfield Town Centre: a vibrant culture, art, leisure and nightlife offering, thriving businesses, a great place to live, improved access and enhanced public spaces.







## HUDDERSFIELD BUS STATION CANOPY



### PROJECT OVERVIEW

**CLIENT** Kirklees Council (in conjunction with West Yorkshire Combined Authority - WYCA)

**VALUE** £7.5 million (Part of a wider £20 million scheme for Huddersfield Bus Station)

**STATUS** RIBA Stage 3 (Construction 2025-2026)



- SGP have supported Kirklees Council on the project since 2017, developing the initial vision to support the Councils Blueprint for Huddersfield Town Centre and subsequent Strategic Outline business Case approval with WYCA.
- As the largest bus Station within West Yorkshire, Huddersfield bus Station sits below a multi-storey car park with limited visual connectivity with the town centre.
- The Clients vision was to provide a structure which would enhance the bus station with a striking gateway to the town centre, linking with wider town centre improvements to enhance public realm, cycling and pedestrian connectivity to the Railway Station to the North.
- The new 120-metre-long undulating glulam structure with full green roof and photo voltaic cells frames the bus station. Perforated artwork will sit into the MSCP decks above and a large cycle hub sits below the canopy as it addresses McCauley Square.





## DEWSBURY BUS STATION



### PROJECT OVERVIEW

**CLIENT** Kirklees Council & WYCA

**COMMISSION SCOPE** Concept Proposals

- SGP supported Kirklees Council to develop a strategic vision for the comprehensive redevelopment of Dewsbury Bus Station as part of Kirklees Council's bid for funding from the Transforming Cities Fund.
- With a focus on providing a high quality concourse facility which meets the capacity requirements for the bus station and improved connectivity to the town centre and highway improvements planned around the site.









## HECKMONDWIKE BUS STATION



### PROJECT OVERVIEW

**CLIENT** Kirklees Council & WYCA

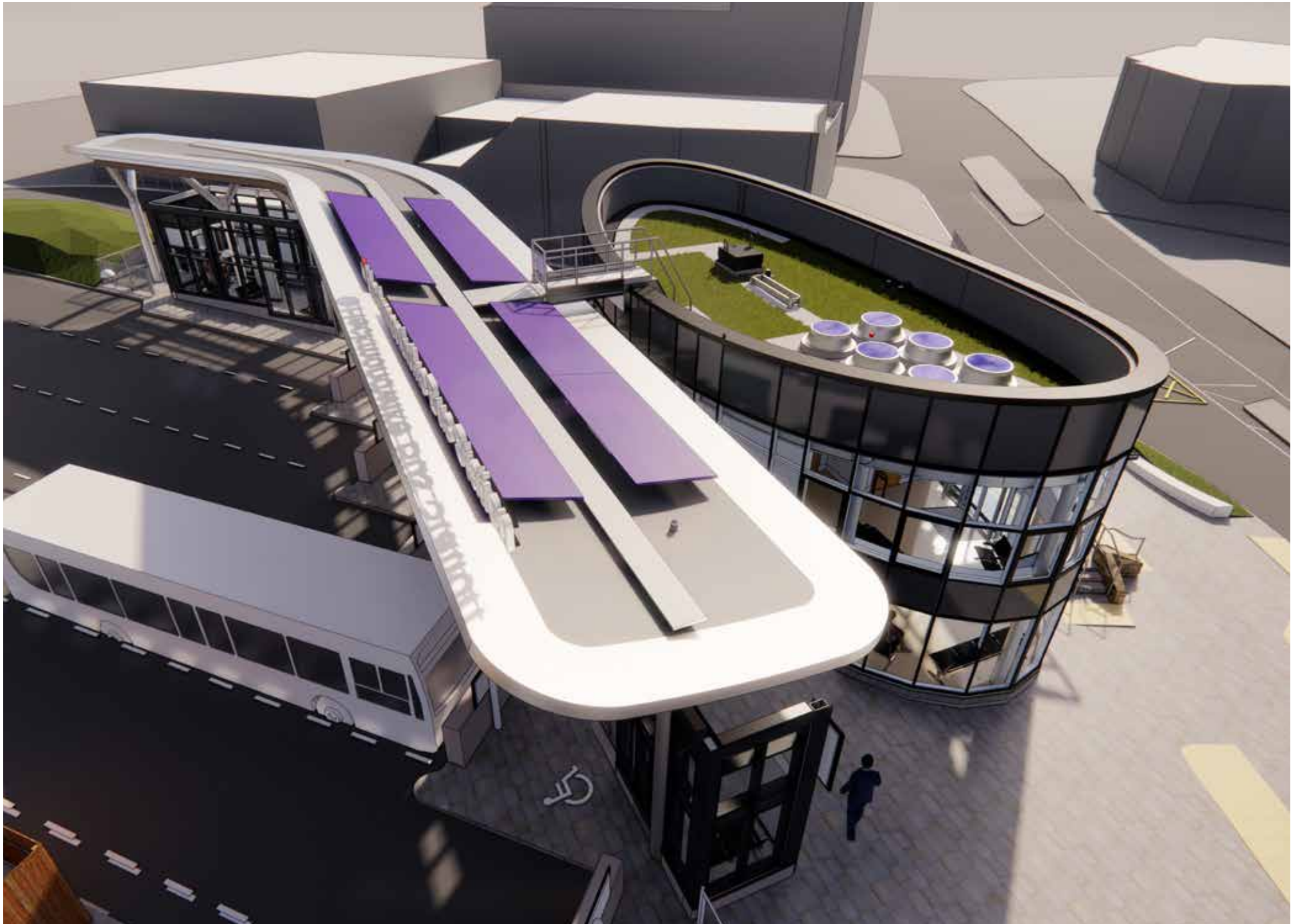
**COMMISSION SCOPE** Delivery & Design

**STATUS** RIBA Stage 5 (Start on Site Q1 2024)

**YEAR OF COMPLETION** 2025

- SGP supported Kirklees Council to develop a strategic vision for the comprehensive redevelopment of Heckmondwike bus hub as part of Kirklees Council's bid for funding from the Transforming Cities Fund.
- With a focus on providing a high quality concourse facility which meets the capacity requirements for the bus station and improved connectivity to the town centre with public realm enhancements.







## SELBY STATION



### PROJECT OVERVIEW

**CLIENT** Selby District Council / North Yorkshire County Council

**SCOPE** Design & Delivery

**VALUE** £7 million



- Development of a new gateway entrance to Selby Station to replace the 1960's addition to this listed station in conjunction with WSP.
- The client's objective is to provide a landmark entrance which compliments the heritage assets within the station, enhances passenger facilities and is linked with a wider strategy to provide a new public realm plaza approach via the park to the town centre.
- The proposed new Station will provide a modern contemporary facility and include enhanced passenger waiting, retail facilities, staff accommodation and changing places facility.
- The Scheme is being funded via the Transforming Cities Fund and is being developed in conjunction with First Trans Pennine, as station operator and Network Rail.





# BLETHCLEY RAIL DEPOT MILTON KEYNES



## PROJECT OVERVIEW

**CLIENT** BWB Consulting

**FORM OF CONTRACT** Design & Build

**VALUE** £40 million

**STATUS** RIBA Stage 5

**YEAR OF COMPLETION** 2025

- 
- Extension of the existing rail depot to cater for an extended fleet, upgrade of the existing office block accommodation and associated external works including, new sidings, plant and access roads and parking.





## DERBY BUS STATION



### PROJECT OVERVIEW

**CLIENT** Derby City Council

**VALUE** TBC

- Development of an extension to the existing bus station to provide enhanced passenger waiting for coach users, information point and changing places facility in conjunction with Tetra Tech.
- The client's objective is to provide an extended concourse waiting facility which compliments the existing bus station, enhances coach users waiting facilities (which are currently external in small shelters) and includes green opportunities including green roof and photo voltaic's. The facility will also include modern additions such as automatic doors to each coach boarding area.
- The scheme is being funded via the Transforming Cities Fund.





# DUDLEY VERY LIGHT RAILWAY NIC

## PROJECT OVERVIEW

**CLIENT** Dudley Metropolitan Borough Council

**FORM OF CONTRACT** New Build – Design & Build

**VALUE** £17 million

**YEAR OF COMPLETION** 2023

- The project is being overseen by the Dudley Metropolitan Borough Council and Warwick Manufacturing Group (WMG) of the University of Warwick
- SGP are providing Technical Delivery Services (RIBA Stage 4-6 for Clegg Construction).



- A new very light rail (VLR) innovation centre and rail line has been proposed for Dudley, UK. The project will connect the town with the national rail network for the first time in more than five decades.
- The new line will comprise two tracks, one for pilot testing of VLR vehicles manufactured at the centre and the other for passenger services. The project is expected to generate approximately 50 jobs during the initial manufacturing phase, which will be enhanced following the start of operations.
- The large 3 storey Innovation Centre includes maintenance and testing areas, classroom, conference facilities and exhibition space.







# WEST YORKSHIRE COMBINED AUTHORITY – TRANSFORMING TRAVEL CENTRES

## PROJECT OVERVIEW

**CLIENT** West Yorkshire Combined Authority

**VALUE** TBC

- SGP were appointed by WYCA to develop a new modern concept for these bus station travel centres which considers new ticket office counters and bank style customer services systems with touch screen information and e ticketing.
- Following the development of a new concept, this is now being rolled out at bus station including Leeds, Bradford, Huddersfield, and Halifax.
- The first of these at Leeds and Bradford have now been completed.





## PROLOGIS RFI DIRFT II + III DAVENTRY



### PROJECT OVERVIEW

**CLIENT** Prologis UK Ltd

**FORM OF CONTRACT** Design & Build

**VALUE** £1 billion

**YEAR OF COMPLETION** ongoing

- SGP were commissioned by Prologis to masterplan DIRFT II + III which is at the heart of the UK's multi-modal logistics and the distribution network. In rail terms, DIRFT is connected to the West Coast Main Line with direct access to major UK and European destinations, via Felixstowe and other intermodal terminals.
- DRIFT II unit range from 100,000 to 1,600,000ft<sup>2</sup> in a single footprint.





# BOURNEMOUTH AVIATION

## PROJECT OVERVIEW

**CLIENT** Rigby Group plc

**VALUE** £96 million

**YEAR OF COMPLETION** 2022

- A million square feet of new commercial floor space over approximately 30 hectare of land.
- Masterplan design proposes a high-quality business park based on good sustainable principles.
- The scale of the scheme will allow for a range of business sizes, thus providing a sustainable and holistic development that complements the existing and future proposals for the area.
- It is envisioned that the site will be able to accommodate units ranging in size from around 2,300m<sup>2</sup> to 42,000m<sup>2</sup> (25,000ft<sup>2</sup> to 450,000ft<sup>2</sup>), mainly industrial and warehousing with ancillary office space and hangar space, catering for both airside and non-airside uses.





## NORWICH AIRPORT HANGAR AND WORKSHOP

### PROJECT OVERVIEW

**CLIENT** Rigby Group plc

**VALUE** £7 million

**YEAR OF COMPLETION** 2020



- Double bay hangar capable of housing two Airbus 320 aircraft with apron access.
- Norwich Airport is home to major offshore helicopter transport operations, corporate aviation, general aviation and flight school activities. The airport is also a centre of Maintenance, Repair and Overhaul (MRO) excellence.
- This Hangar and workshop provides further airside development as Norwich International Airport continues to grow.







FURTHER INFORMATION  
KEY CONTACTS + OUR  
PORTFOLIOS





# +

## FRAMEWORKS

### TRANSPORT FOR GREATER MANCHESTER

---

SGP is delighted to secure a position on Transport for Greater Manchester's TPS Framework - Lot 6: Transport Architectural Design Services.

Our success in securing a valued position on the TfGM framework for Transport Architecture is the culmination of our experience in this specialist field in both road and rail projects and our sector leads look forward to re-establishing links with TfGM through their historical involvement on TfGM's interchange and cycle programmes across Greater Manchester which included the delivery of Rochdale, Bolton, Altrincham and Wythenshawe Interchanges and the development of Stockport Interchange to RIBA stage 3.



### ARCH CO

---

SGP has secured a position on Arch Co's framework for the delivery of architectural and PD services for the delivery of schemes to re purpose existing railway arches around the UK into either commercial or light industrial purposes. SGP is currently developing proposals for two sites in London. One which considers Restaurant / Gym type uses and another considering more light industrial.

As part of this framework, SGP is also developing proposals for other sites owned by Arch Co which sit adjacent to the operational railway and are considering various mixed use or light industrial purposes for these sites.



### CROWN COMMERCIAL SERVICES FRAMEWORK (CCS)

---

SGP, in conjunction with Costain and BWB, has secured a position on Lot 1 of the CCS framework starting 2022. This strong team up provides the opportunity to bring the framework to public sector clients across sectors including Infrastructure, Education and Health as well as others.





## KEY CONTACTS



### ALISTAIR BRANCH

BA (Hons) Dip Arch RIBA ARB  
PARTNER | TRANSPORT SECTOR LEAD

#### PERSONAL PROFILE

Since joining SGP in 2016 to spearhead SGP's transportation sector development, Alistair has consistently built on his track record of delivering innovative, award-winning designs for key transport clients including Network Rail, TOCs, passenger transport authorities, local authorities, and contractors. He has led his team to secure over £150 million worth of public sector transport schemes, including SGP's first major transport commission – the prestigious £9m Rail Training Centre for Nexus in South Shields.

Alistair is a design-focused, award-winning Chartered Architect who can solve problems, listen, understand and consider a wide range of constraints and project specific issues. He delivers the client's needs and aspirations by maximising flexibility, efficiency and cost awareness, whilst maintaining an overriding concern for design quality, sustainability, buildability and health and safety.

Alistair has been instrumental in the development of internal procedures which improve efficiency and consistency throughout a project's design and delivery.



Connect with Alistair



### MATT BEAUMONT

RIBA ARB MA Dip Arch BA(Hons)  
ASSOCIATE | ROAD AND RAIL SCHEMES

#### PERSONAL PROFILE

Having worked for several well-known architects, leading multidisciplinary teams across a wide range of sectors, Matt joined SGP in 2017 as Principal Architect. He was promoted to Associate in the Leeds office in July 2020, focusing on public sector transportation projects.

Matt has over 10 years' specialist experience in the transport sector, developing a strong track record for delivering complex, award winning infrastructure schemes from inception to completion. Most recently, he has worked on the Nexus Rail Training Centre in South Shields and Broadmarsh MSCP and Bus Station. Key transport clients include Network Rail, Transport for Greater Manchester and West York Combined Authority.

In addition to his wide range of cross sector experience, including leisure (hotels), Embassy, commercial, industrial and transport projects, Matt has made significant contributions to SGP's Matrix Delivery and Revit/BIM groups, and championed the spread of Revit and BIM at the Leeds office.



Connect with Matt



## KEY CONTACTS



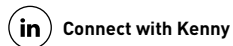
### KENNY LEADBEATER

ACIAT BA(Hons) Dip Arch PG Dip AP RIBA LRPS  
ASSOCIATE | AIR SCHEMES

#### PERSONAL PROFILE

Kenny Leadbeater initially qualified as an Architectural Technologist in Guernsey, after completing a 5-year apprenticeship scheme. He then graduated from Kingston University with an Honours Degree, The Bartlett - University College London with a Diploma in Architecture and De Montfort University with a Post Graduate Diploma in Architectural Practice.

Currently operating as a Chartered Architect, Kenny has strong design skills, project running abilities and has a solid grounding in several sectors after spending ten years in practice in London. He has experience in designing and delivering offices (both refurb and new build, medium and large HQs), high end residential (including penthouses, private individual houses and manor house refurbs), aviation masterplanning and delivery of airside buildings, education (including primary schools, special needs schools) and he has commercial experience (including retail/restaurant, major industrial buildings and incubator units).



### SUE EYRE

ARB/RIBA  
STUDIO DIRECTOR | ROAD AND RAIL SCHEMES

#### PERSONAL PROFILE

Joining SGP as an Associate Architect in 2021, Sue brings a wealth of design and technical experience and is a very strong architect with strong sector synergies in Transport (Bus Station and Railway Stations) as well as Housing, Education, Sport & Leisure, Interior Design and Hospitality.

Sue has a real passion for design & process, and this is demonstrated through her work as a qualified DQI facilitator (Design Quality Indicators), bring and additional skill set to the team.

Sue is current supporting the SGP Transport teams in the delivery of a number of significant transport projects in the road and rail sub sectors.

Sue is a highly motivated & hardworking individual, who can reliably manage a team and has a good organisation, planning & design skills to deliver a wide range of projects. Sue builds and maintain excellent working relationships and has experience of coordinating complex projects with a wide range of consultants & contractors. Sue also has extensive site experience on a wide range of construction technologies.



# + OUR PORTFOLIOS

Our portfolios are available, conveying our areas of expertise in many sectors.

Visit our website and download an electronic version from the relevant section [www.stephengeorge.co.uk](http://www.stephengeorge.co.uk)

Or email us at:  
[enquiries@stephengeorge.co.uk](mailto:enquiries@stephengeorge.co.uk)

Should you be interested in receiving hard copies of one or more of these, please contact any of our offices.

**LONDON:** +44 (0)203 833 1310

**LEICESTER:** +44 (0)116 247 0557

**LEEDS:** +44 (0)113 246 7969

**BIRMINGHAM:** +44 (0)121 222 5346

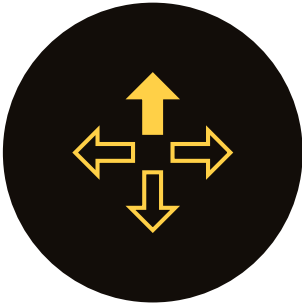
**SOLIHULL:** +44 (0)121 711 6929



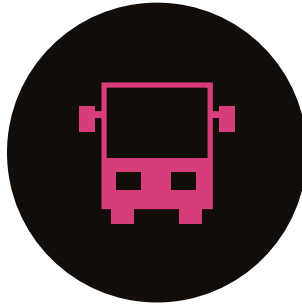


# OUR SECTORS

INDUSTRIAL



TRANSPORT



SCIENCE + INNOVATION



RETAIL + MIXED USE



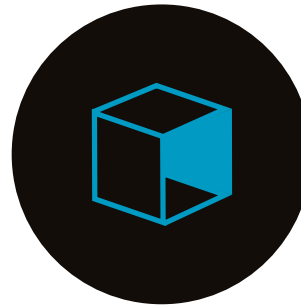
EDUCATION



HEALTHCARE



INTERIORS



MASTERPLANNING



OFFICE



RESIDENTIAL



LEISURE + HOSPITALITY





LONDON  
t: +44 (0)203 833 1310

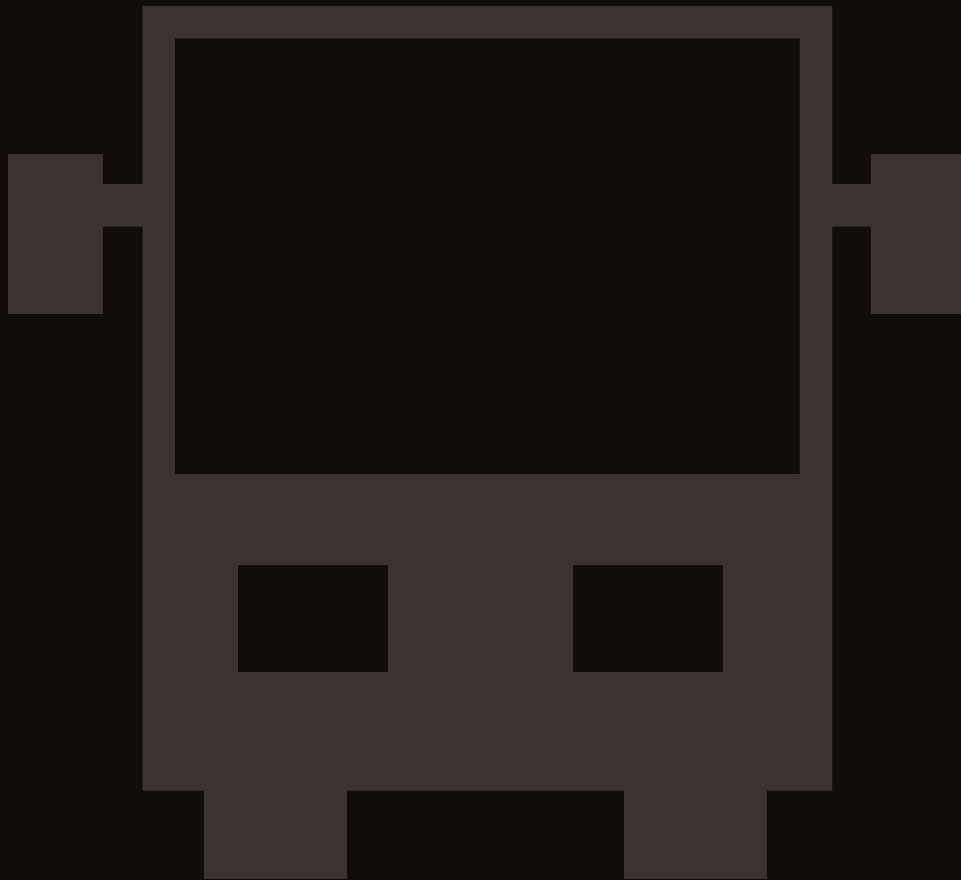
LEICESTER  
t: +44 (0)116 247 0557

LEEDS  
t: +44 (0)113 246 7969

BIRMINGHAM  
t: +44 (0)121 222 5346

SOLIHULL  
t: +44 (0)121 711 6929

[www.stephengeorge.co.uk](http://www.stephengeorge.co.uk)



**SGP**

Architects + Masterplanners